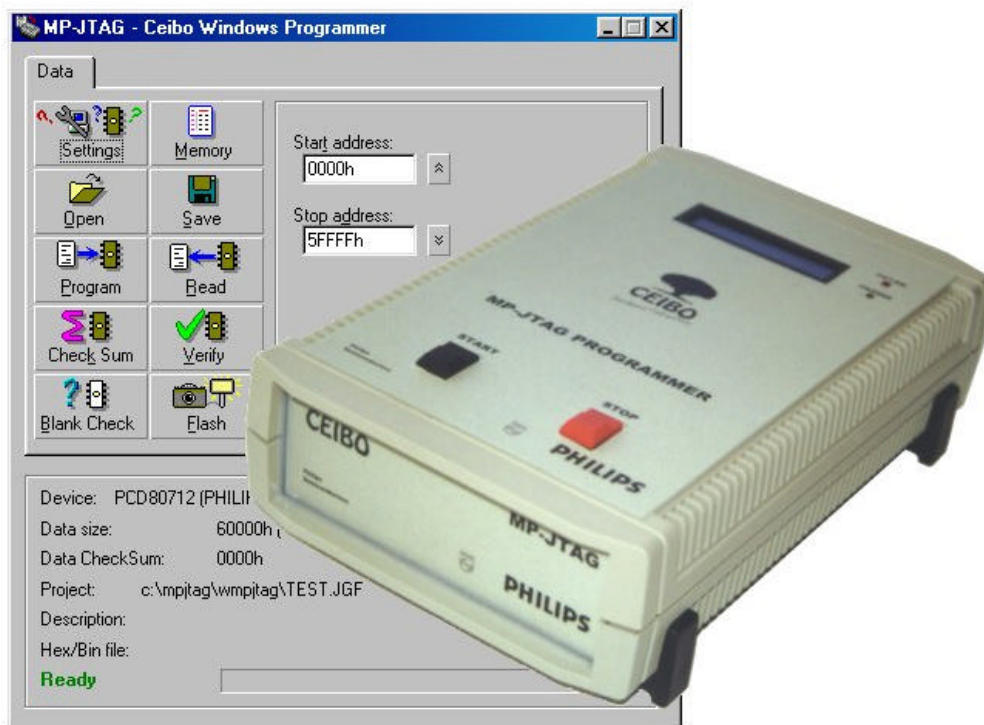


# CEIBO MP-JTAG PROGRAMMER



*Programmer for JTAG interfaced Devices*

## FEATURES

- **JTAG Device Interface Programmer**
- **In-System Programming Support**
- **PC Hosted or Stand Alone Operation**
- **Dynamically Adaptable Logic levels 1.2-5V**
- **Programmable Vpp 1-25V**
- **Handles Standard Hex and Binary files**
- **MS-Windows User Interface**
- **Performance up to Device Limit**
- **Programming Adapters**

## **DESCRIPTION**

The MP-JTAG programmer is used to program different devices with a JTAG interface. It consists of a box externally connected to a PC by means of a serial link RS-232 at 115Kbaud. Furthermore, the programmer can operate stand alone without any computer. The PC controlled mode will be referred to as “engineering mode”, allowing software operations not needed in the duplication of OTPs. The “production mode” uses an internal FLASH Memory to duplicate the chips and the programmer can be controlled by a few pushbuttons. The internal FLASH Memory is loaded using the software capabilities.

## **SPECIFICATIONS**

### **JTAG INTERFACE**

Frequency: The maximum frequency is 25MHz. This is generated by a programmable source from 100KHz to 25MHz in steps of 10KHz. Frequency setting is software controlled. Connector: 2-row of 5-pins 0.1” Signals: TRST, TDI, TDO, TMS, TCK, Ground . Signal levels: dynamically adaptable from 1.2V to 5V.

### **EXTENSION SOFTWARE**

Connector: D-Type 25 pin female Signals: Vpp, Start in, Passed out, Failed out, EOT out, Vcc, Ground, Spare I/Os. Vcc level: dynamically adaptable from 1.2V to 5V Vpp level: programmable from 1V to 25V.

### **PROGRAMMER ADAPTER**

Connected to JTAG connector. Allows direct device programming on a ZIF socket

### **MEMORY**

SRAM (for engineering mode): up to 1Mbyte

Internal Flash (for production mode): up to 1Mbyte internal

### **PERFORMANCE**

Production mode: data is programmed from a Flash Memory at the maximum rate that the device under programming allows.

Engineering mode: first the data will be transferred from the PC by RS-232 at 115K Baud. Once the data is stored in the programmer SRAM, the communication is reduced to a simple command set (program, blankcheck, etc.) hence, performance will remain similar to production mode.

### **USER SOFTWARE**

MS-Windows (95, NT or later) based software interface including the following functions: Program, Read, Compare, Blankcheck, Checksum, Load, Save, Program Master Flash, Signature, Security.

## **SUPPORTED DEVICES**

PCD80710/12. Call Ceibo to receive the latest update.

## **CONTROL PANEL**

The control panel used in Production Mode has the following components:  
LC (2x16), Start Button, Stop Button, Pass LED, Fail LED.

<i>Signal Name</i>	<i>9-Pin Male Connector (MP-JTAG Side)</i>
Receive Data	Pin 3
Transmit Data	Pin 2
Signal Ground	Pin 5

## **HOST CHARACTERISTICS**

IBM PC or compatible system with 8Mbytes of RAM, and one RS-232 port.

## **INPUT POWER**

85VAC to 265VAC, 50hz to 60Hz. That makes this unit suitable for any country outlet.

## **MECHANICAL DIMENSIONS**

MP-JTAG is 155mm long, 60mm high and 250mm wide.

## **ITEMS SUPPLIED AS STANDARD**

MP-JTAG programmer, User's Software, User's Manual, RS-232 Interface Cable and In-System JTAG Interface Cable. Power cord not included

## **OPTIONS**

Automatic handler interface cable.

## **WARRANTY**

Two years limited warranty, parts and labor.

## **MP-JTAG ORDERING INFORMATION**

<i>Item</i>	<i>Description</i>
MP-JTAG	Programmer, Software, Cables